

1.1 Evaluating Expressions

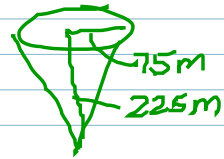
pg 5

Ex #1: $m + (p-1)^2$ if $m=3$ and $p=-4$
 $m + (-4-1)^2$
 $3 + (-5)^2$
 $3 + 25$
 28 PEMDAS

pg 6 Ex #2: $a + b^2(b-a)$ $a=5$ and $b=-3.2$
 $5 + (-3.2)^2(-3.2-5)$
 $5 + 10.24(-8.2)$
 $5 + -83.968$
 -78.968

Ex #3:

$V = \frac{1}{3}\pi r^2 h$
 $\frac{1}{3}\pi 75^2 225$
 $\frac{1}{3}\pi 5625(225)$
 $1,325,359$



1,3 pg 18. Ex: #1

a) 2 more than 4 times the cube of a #.

$4(x)^3 + 2$

b) the quotient of 5 less than a # and 12.

$\frac{x-5}{12}$

pg 20

Ex #4 a) $n - 3.24 = 42.1$ b) $\frac{5}{8}x = 20$
 $+3.24 +3.24$ $\frac{5}{8}x = 20$
 $x = -32$

Ex #5

$h = 45.34$
 $5(x+3) + 2(1-x) = 14$
 $5x + 15 + 2 - 2x = 14$
 $3x - 17 = -14$
 $3x = 3$
 $x = 1$

Ex #7

if $(x-1)z = 18$ then $z = \frac{18}{x-1}$
 $+12 + 12$
 $6 \cdot 5 + 5$
 35

1.1 Evaluating Expressions

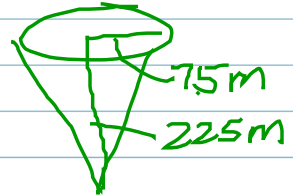
Pg 5

EX #1: $m + (p-1)^2$ if $m=3$ and $p=-4$
 $m + (-4-1)^2$
 $3 + (-5)^2$ PEMDAS
 $3 + 25$
28

Pg 6 EX #2: $a + b^2(b-a)$ $a=5$ and $b=-3.2$
 $5 + 3.2^2(-3.2-5)$
 $5 + 10.24(-8.2)$
 $5 + -83.968$
-78.968

EX #3:

$V = \frac{1}{3} \pi r^2 h$
 $\frac{1}{3} \pi 75^2 225$
 $\frac{1}{3} \pi 5625 (225)$
1,325,359



1.3 pg 18. Ex: #1

a) 2 more than 4 times the cube of a #

$4(x)^3 + 2$

b) the quotient of 5 less than a # and 12

$\frac{x-5}{12}$

Pg 20

EX #4 a) $n - 3.24 = 42.1$
 $+3.24 \quad +3.24$

b) $\frac{5}{8}x = 20 \left(\frac{-8}{5}\right)$
 $x = -32$

EX #5.

$n = 45.34$
 $5(x+3) + 2(1-x) = 14$
 $5x + 15 + 2 - 2x = 14$
 $3x + 17 = 14$
 $-17 \quad -17$

$3x = -3$
 $x = -1$

EX #7

$6x - 12 = 18$ then $6x + 12 = 30$
 $+12 \quad +12$
 $\frac{6x = 30}{6}$
 $x = 5$
35